

# What does SoonerPlan cover?

- Birth control, including long-acting methods such as implants and intrauterine devices (IUDs)
- Office visits and physical exams related to family planning
- Laboratory tests related to family planning services, including pregnancy tests, pap smears and screening for some sexually transmitted infections
- Tubal ligations for women aged 21 and older
- Vasectomies for men aged 21 and older
- Gardasil® (HPV\* vaccine) for males and females

\*HPV - Human Papillomavirus – is a very common infection. It can cause health problems, including several kinds of cancer, in both men and women.

For more information,  
call us at

**1-800-987-7767  
or 711 (TDD)**

8 a.m. to 5 p.m.  
Monday through Friday  
or visit us online at

**[okhca.org/soonerplan](http://okhca.org/soonerplan)**

# SoonerPlan



Helping men and women  
be healthy and  
prevent pregnancy until  
they are ready.

4345 N. Lincoln Blvd., OKC | [okhca.org](http://okhca.org) |   

A Program of **SoonerCare**  
Oklahoma Health Care Authority



### **Who qualifies to receive SoonerPlan services?**

- U.S. citizens or qualified immigrants
- Oklahoma residents
- Applicants not enrolled in SoonerCare or Insure Oklahoma
- Applicants within the income standard
- Applicants with or without other insurance
- Women who have completed their pregnancy-related SoonerCare coverage



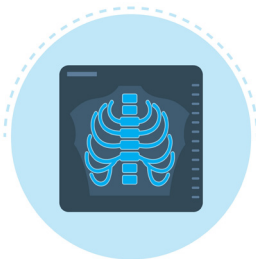
### **What happens after I apply for SoonerPlan coverage?**

You will receive a letter or email telling you if you are approved or denied. If approved, you may print a SoonerCare ID card from the SoonerCare member portal online. You may qualify for SoonerPlan for up to 12 months.



### **Where can I receive SoonerPlan services?**

You can receive care from any SoonerCare provider who offers family planning services. This may include your local county health department.



### **What if I need additional medical services?**

Additional services are not covered by SoonerPlan. The Oklahoma Health Care Authority will give you referral information, but you are responsible for payment of services you receive. Call the SoonerCare Helpline at 800-987-7767 or 711 (TDD) 8 a.m. to 5 p.m., Monday through Friday or visit [www.okhca.org/soonerplan](http://www.okhca.org/soonerplan).

## **Questions?**

Call us 8 a.m. to 5 p.m. Monday through Friday at 1-800-987-7767 or 711 (TDD) or visit us online at [www.okhca.org/soonerplan](http://www.okhca.org/soonerplan).

# **3 Ways to Enroll**

Enroll for SoonerPlan online at [www.mysoonerplan.org](http://www.mysoonerplan.org). For assistance, call 1-800-897-7767 or 711 (TDD).

**or**

Visit your local health department. To find your local state/county/city health department office or clinic, visit [www.ok.gov/health](http://www.ok.gov/health).

**or**

Visit your local county Oklahoma Department of Human Services (DHS) office. To find your local county DHS office, call 1-855-880-8003 toll free or visit [www.okdhs.org/countyoffices](http://www.okdhs.org/countyoffices).

