



DIAL 211

SOCIAL SERVICE INFORMATION LINE

What is 211?

- A single, easy-to-remember phone number to navigate the system of community information and services.
- A system to help individuals locate health and human service resources across Oklahoma.

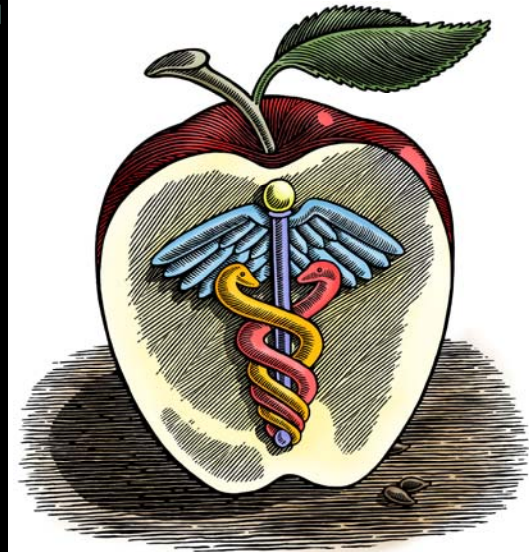
How Does 211 Work?

- 211 is free, confidential and available 24/7.
 - Just dial 211.
- Talk to the information and referral specialist.
- Receive multiple referrals in your area.



This publication is issued by The Oklahoma Health Care Authority as authorized by Title VI and Title VII of the 1964 Civil Rights Act and the Rehabilitation Act of 1973. 500 copies have been prepared and distributed at a cost of \$10.00. Copies have been deposited with the Publications Clearinghouse of the Oklahoma Department of Libraries. [74 O.S.2001 § 3105 (C)] Download additional copies from the OHCA Web site www.okhca.org. SGUENG-HLTHED-7-2009

A GUIDE TO COMMUNITY RESOURCES IN OKLAHOMA CITY



HEALTH
EDUCATION



**A referral may be needed from your provider.*

**DIABETES EDUCATION
CLASSES**

- * Oklahoma Diabetes Center
405-271-7000

**DIABETES
SELF-MANAGEMENT
TRAINING**

- * Diabetes Center of Oklahoma
405-949-6000

**DIABETES
SUPPORT GROUP**

- * Diabetes Support
405-752-3600

DIABETES INFORMATION

- * www.ndep.nih.gov

**CANCER EDUCATION
CLASSES**

- * Mercy Health Center
405-752-3388

CANCER SUPPORT GROUP

- * Mercy Health Center
405-752-3388

**CHRONIC LUNG DISEASE
SUPPORT GROUP**

- * Integris Baptist Medical Center
405-949-4044

- * Kindred Hospital

405-232-8000, ext. 4400

**CAREGIVERS SUPPORT
GROUP**

- * Mercy Health Center
405-936-5821

ASTHMA EDUCATION

- * www.asthmaok.org

HEART HEALTH EDUCATION

- * American Heart Association
www.americanheart.org

DENTAL CARE

- * D-Dent
405-424-8092

(must be 60+ and/or disabled)

- * OU College of Dentistry
405-239-7551

- * Oklahoma Community Health Services Inc.
405-632-6688

EYE CARE

- * Lion's Club
405-947-6540

PRESCRIPTION ASSISTANCE

- * RX for Oklahoma
1-877-794-6552

SOONERCARE INFORMATION

- * Member Services
405-522-7171

- * SoonerRide
1-877-404-4500

- * Eligibility
405-521-3646

DISABILITY SERVICES

- * Oklahoma Dept. of Rehab Services
1-800-487-4042

HEALTH DEPARTMENT

- * Oklahoma State Department of Health
1-800-522-0203