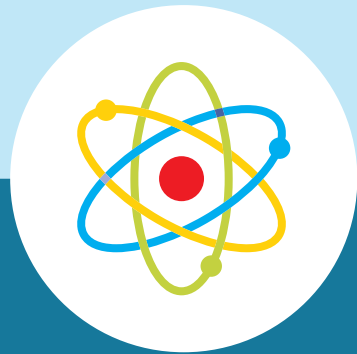


SUBSTANCE USE STEWARDSHIP

OHCA is proactively engaged in efforts to combat drug abuse. For more information about the opioid epidemic in Oklahoma, Medication Assisted Treatment and a list of available treatment centers, visit okimready.org or okhca.org/opg.



Medicated Assisted Treatment (MAT) Changes

Prior authorization for MAT is no longer required on preferred products. Providers must have a DEAX number on file with OHCA. To ensure that your number is on file, please email your DEAX number to providerenrollment@okhca.org. Download specific prior authorization criteria at okhca.org/MAT.



No Prior Authorization Required

- Suboxone® (buprenorphine/naloxone SL films) – BRAND PREFERRED
- Buprenorphine/naloxone SL tablets – GENERIC ONLY
- Vivitrol® (naltrexone injection)



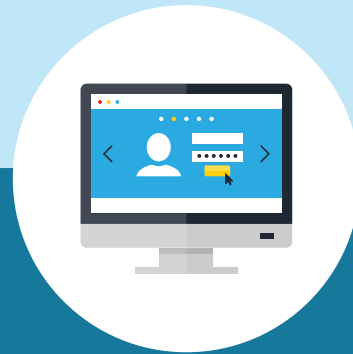
Pregnant Members

Members who are pregnant may receive single ingredient buprenorphine tablets.



Morphine Milligram Equivalent and MAT

OHCA is committed to reducing opioid use disorder and overdoses. Medications for MAT will continue to be exempt from the opioid morphine milligram equivalent (MME) limit implementation.



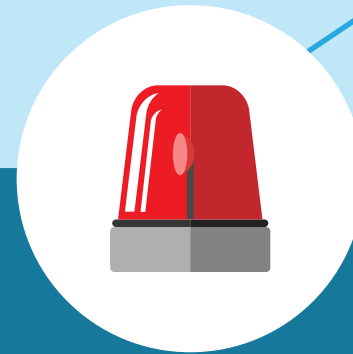
Prior Authorization Required

- Bunavail® (buprenorphine/naloxone buccal films)
- Zubsolv® (buprenorphine/naloxone SL tablets)
- Subutex® (buprenorphine SL tablets)
- Probuphine® (buprenorphine implant)
- Lucemyra™ (lofexidine)
- Sublocade™ (buprenorphine ER injection)
- Buprenorphine/naloxone SL films (generic)



Naloxone Companion Prescription

Naloxone, the opioid overdose antidote, should be prescribed with all MAT prescriptions. Providers are encouraged to co-prescribe this life-saving drug to all at-risk patients.



Check Before You Write

Per Oklahoma law (HB 1948) providers should check the prescription monitoring program every time before prescribing MAT.