



### TOTAL ENROLLMENT — OKLAHOMA MEDICAID

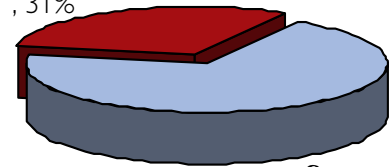
AID GROUP	Age Group	Enrollment	% of Aid Group	% of Total
Aged/Blind/Disabled	Child	12,319	10.05%	2.37%
Aged/Blind/Disabled	Adult	110,226	89.95%	21.24%
Children/Parents	Child	344,365	88.76%	66.36%
Children/Parents	Adult	43,625	11.24%	8.41%
Other	Child	508	6.05%	0.10%
Other	Adult	7,883	93.95%	1.52%
<b>Total Enrollment</b>	<b>518,926</b>	Adults	161,734	32%
		Children	357,192	68%

OTHER Group includes-Child custody-Refugee-Qualified Medicare Beneficiary-SLMB-DDSD Supported Living and TB patients.

Note that all subsequent "breakdown" figures are groups within the above total enrollment numbers.

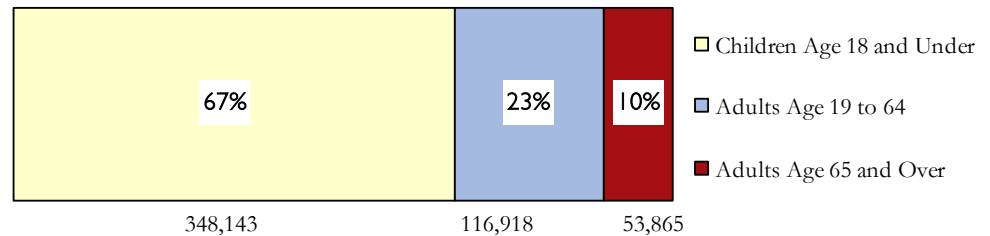
### Delivery System Breakdown of Total Enrollment

Fee-For-Service,  
158,261, 31%



SoonerCare,  
359,682, 69%

### Age Breakdown of Total Enrollment



### New Enrollees

Oklahoma Medicaid beneficiaries that have not been enrolled in the past 6 months.

Adults	3,442
Children	8,223
<b>Total</b>	<b>11,665</b>

### Other Enrollment Facts

Unduplicated enrollees State Fiscal Year-to-Date (July through report month) — **670,797**

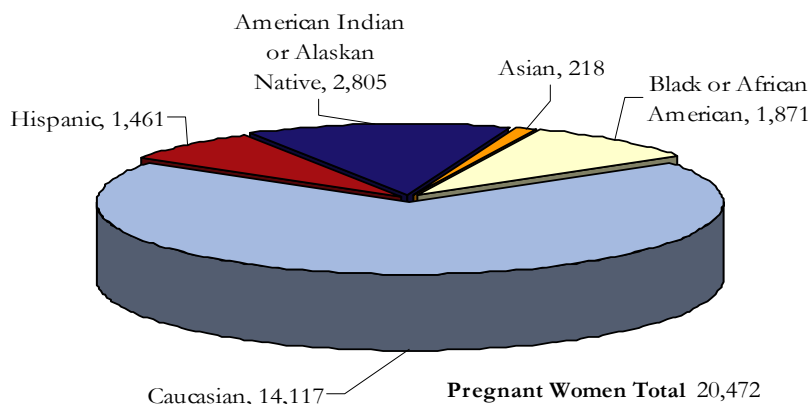
Oklahoma Medicaid enrollees residing in a long-term care facility — 17,376

Oklahoma persons enrolled in both Medicare and Medicaid (dual eligibles) — 71,836

### Race Breakdown of Total Enrollment

	Children	Adults	Total	Percent
African American	60,923	24,423	85,346	16%
American Indian	50,763	14,558	65,321	13%
Asian or Pacific Islander	3,204	1,674	4,878	1%
Caucasian	205,207	116,124	321,331	62%
Hispanic	37,095	4,955	42,050	8%

### Pregnant Women Enrolled by Race — Oklahoma Medicaid



### SCHIP Breakdown of Total Enrollment

Persons eligible for expanded Medicaid eligibility under the SCHIP program are under age 19 and have income between the maximum for standard eligibility and the expanded 185% of Federal Poverty Level (FPL) income guidelines.

Age Breakdown	% of FPL	SCHIP Eligibles
INFANT	150% to 185%	998
01-05	133% to 185%	9,079
06-12	100% to 185%	22,651
13-18	100% to 185%	13,848
<b>Total</b>		<b>46,576</b>



State Fiscal Year-to-Date Enrollment by Aid Category

