



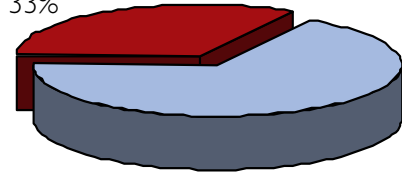
JULY 2005 *Fast Facts*

TOTAL ENROLLMENT — OKLAHOMA MEDICAID

AID GROUP	Age Group	Enrollment	% of Aid Group	% of Total
Aged/Blind/Disabled	Child	13,300	10.37%	2.44%
Aged/Blind/Disabled	Adult	114,919	89.63%	21.06%
Children/Parents	Child	360,048	89.51%	65.97%
Children/Parents	Adult	42,182	10.49%	7.73%
Other	Child	613	6.89%	0.11%
Other	Adult	8,289	93.11%	1.52%
Breast and Cervical Cancer		2,022		0.37%
Family Planning		4,392		0.80%
Total Enrollment		545,765		
	Adults	171,804	31%	
	Children	373,961	69%	

Delivery System Breakdown of Total Enrollment

Fee-For-Service,
180,794, 33%



SoonerCare,
364,971, 67%

OTHER Group includes—Child custody-Refugee-Qualified Medicare Beneficiary-SLMB-DDSD Supported Living and TB patients.

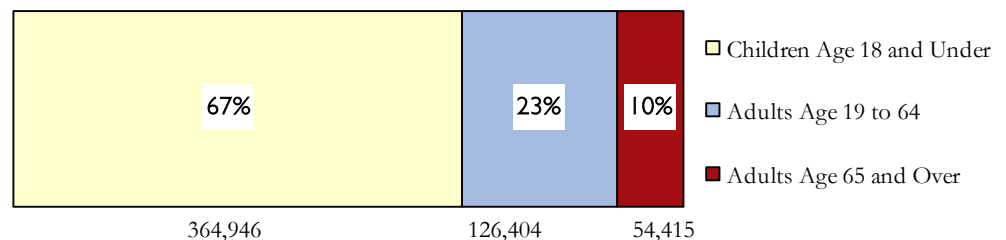
Note that all subsequent “breakdown” figures are groups within the above total enrollment numbers.

New Enrollees

Oklahoma Medicaid beneficiaries that have not been enrolled in the past 6 months.

Adults	3,658
Children	8,815
Total	12,473

Age Breakdown of Total Enrollment



Other Enrollment Facts

Unduplicated enrollees State Fiscal Year-to-Date (July through report month) — **545,765**

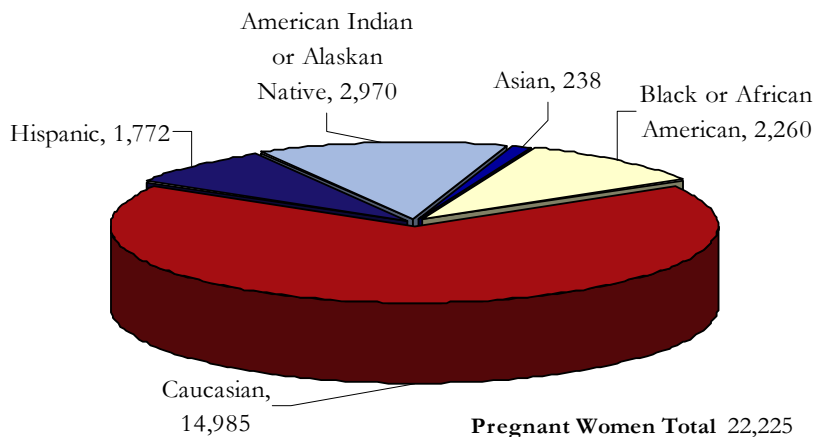
Oklahoma Medicaid enrollees residing in a long-term care facility — 16,948

Oklahoma persons enrolled in both Medicare and Medicaid (dual eligibles) — 79,871

Race Breakdown of Total Enrollment

	Children	Adults	Total	Percent
African American	63,026	25,162	88,188	16%
American Indian	53,336	15,229	68,565	13%
Asian or Pacific Islander	3,646	1,772	5,418	1%
Caucasian	212,255	123,101	335,356	61%
Hispanic	42,646	5,592	48,238	9%

Pregnant Women Enrolled by Race — Oklahoma Medicaid



SCHIP Breakdown of Total Enrollment

Persons eligible for expanded Medicaid eligibility under the SCHIP program are under age 19 and have income between the maximum for standard eligibility and the expanded 185% of Federal Poverty Level (FPL) income guidelines.

Age Breakdown	% of FPL	SCHIP Eligibles
INFANT	150% to 185%	1,304
01-05	133% to 185%	10,598
06-12	100% to 185%	26,391
13-18	100% to 185%	16,542
Total		54,835



January 2005 through July 2005 Enrollment by Aid Category

